

Advance your knowledge of commercial door hardware products

The ASSA ABLOY New Zealand Commercial Training Program is a program developed for people new to the commercial side of the door hardware industry – typically suited to new employees and those with up to 3 years experience in working with ASSA ABLOY’s commercial door hardware products.

With over 25,000 different items in our Australasian commercial door hardware range alone and the growing complexities of Building Codes, Standards and other regulations there is a great need for training within our industry.

With the knowledge you will gain during the Commercial Training Program, you will be better equipped to choose the right products in a range of applications.

Program content

The Commercial Training Program covers the following areas:

- Introduction to the commercial environment, standards and building codes
- Mortice locks
- Door furniture
- Key-in-knob and key-in-lever locks
- Mechanical digital locks
- Panic exit devices
- Keying systems
- Door closers
- Electro-mechanical products
- General hardware
- Padlocks
- Besam and Henderson introduction

Learning outcomes

The Commercial Training Program will provide:

- A thorough understanding of the impacts of regulations on selection of door hardware
- Hands on experience working with the products to perform common set-up and adjustments
- Practical experience working with product catalogues to resolve common questions and ascertain part numbers for specific products
- Important information regarding suitability of products to particular applications

- Details of the key features of the different product ranges
- Printed training program manuals covering the 12 major areas of the program
- Overview of the installation process
- Overview of the range of accessories and options in each product group
- Experience in the range of functions available within the different product groups
- Opportunities for discussion with our trainers who have many years of experience working with the products and marketplace

On satisfactory completion

Participants will receive a framed certificate of completion from ASSA ABLOY and will have a good base knowledge of commercial door hardware to build on over their careers in the industry.

Duration

The Commercial Training Program is run over two full days of face-to-face training.

Two weeks prior to the commencement of the face-to-face training, participants are required to complete approximately 1-2 hours of pre-work. This is mailed to the participant, to be completed before the face-to-face training. The pre-work ensures all participants have a pre-determined understanding of some of the basics of the commercial environment and conserves valuable class time to focus on products.

On completion of the face-to-face training, participants are given a written assessment task, to be completed and mailed back to ASSA ABLOY. The assessment task is designed to consolidate the training and ensure participants have a good comprehension of the topics covered.

Commercial training enrolments

Entry requirements

To ensure the Commercial Training Program will be a beneficial investment of your time, please ensure that you meet the following guidelines:

- Currently working within the commercial door hardware industry, or progressing towards a role in the field
- Approval of workplace manager

Where and when is the Commercial Training Program run?

The program is run in the following locations:

- Auckland
- Wellington
- Christchurch

The program runs approximately every two months in each location. For locations and dates, log into the Business Partners Portal at www.lockweb.com.au and follow the link to Training Programs.

How to enrol?

Complete the attached application form and return it to the ASSA ABLOY New Zealand CTP Coordinator.

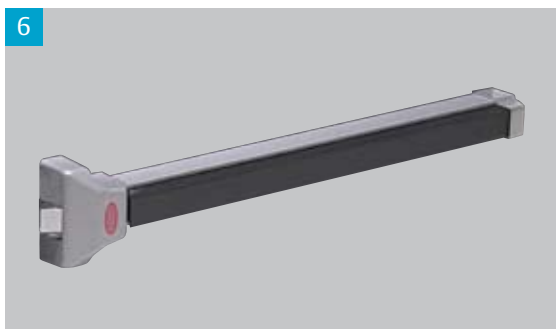
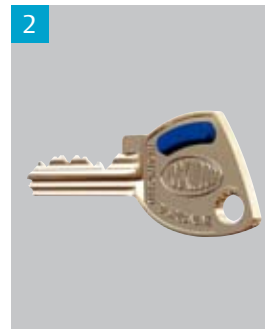
Training program costs

The Commercial Training Program is run at no charge to ASSA ABLOY customers and business partners. Where travel and/or accommodation is required, the participant will need to cover his/her own expenses.

Other training programs

We also run a Retail Training Program, Industrial Training Program, and other specialist training from a variety of locations. Check the details at www.lockweb.com.au or alternatively, your sales representative can provide details of our other training programs. Additionally, if you have a specific request, let us know, we may be able to tailor a program to suit your needs.





1 Lockwood 7726 adjustable power door closer

2 Lockwood Generation Six key

3 Trimec ES2000 electric strike

4 Door furniture Aquileart® Robert Watson Centre A2 lever

5 Brass door furniture 1220/1221/70

6 Lockwood 9000 series panic exit device (PED)

7 Lockwood 3572 mortice lock

8 Lockwood 930 series key in lever lockset

9 Detention furniture Lockwood 222D emergency turn with lever

10 Door furniture Lockwood 1800 series brass plate with Veloce #53 lever

Application form Commercial Training Program

ASSA ABLOY

Name: _____

Company: _____

Address: _____

City/Town: _____ Post code: _____

Phone: (_____) _____ Fax: (_____) _____

Mobile: _____

Email: _____

Position in company: _____

Years in the industry (please circle): less than 1 1-2 3-5 more than 5

Manager's name and phone no: _____

ASSA ABLOY representative's name: _____

Preferred training program session:

Location: _____

Dates: _____

Or

Please contact me to arrange a time and location (circle if required)

Do you have any special dietary or physical needs?

When you have completed this form, please email to:

paul.candy@assaabloyasiapacific.com

Or

Fax to:

Paul Candy on 09 415 7222

Once your application is received, you will receive written notification of your enrolment. We may contact you if there are any difficulties in processing the request.