

# Hardware Matters

Fabricators - Issue 6, May 2011



## ARIA D HANDLE FOR SLIDING DOORS

**INTERLOCK™**  
**ASSA ABLOY**

In February this year, ASSA ABLOY released the Interlock Aria Sliding D Handle. The clean lines of the Aria D Handle, coupled with the practicality of the Optimum Sliding Door Lock has proven a popular choice, particularly on larger doors.

Suitable for use with aluminium or timber stiles, the Aria D Handle is a further addition to the Aria family of furniture.

The Aria D Handle is available kitted with the Optimum Sliding Door Lock and the Palladium or Palladium Xtra escutcheon set.

*See inside for more details...*

## Aria D for Sliding Doors

INTERLOCK™

ASSA ABLOY

### Features and benefits:

- Large comfortable grip area with 272mm hole centres
- Popular Aria styling provides consistency with other hardware throughout the home

### Specifications:

- Suitable for aluminium and timber doors
- Standard screws suit door thicknesses ranging from 25 - 70mm
- Kits available in 30mm, 35mm, and 40mm backsets
- Double cylinder, cylinder and turnknob, half cylinder or half turnknob
- Internal half handle set option available

## SL7000 Digital Locksets on the Horizon

Securicraft®

The latest addition to the Securicraft Series Digital Lever Handle Locksets is soon to be released by ASSA ABLOY.

Available with (SL7000M) or without (SL7100) a deadbolt, the SL7000 Digital Lockset Series has a range of new desirable features. Most noteworthy are the new easy code change keypad (patent pending), roller ball push buttons for increased security and clutch action on the outside lever preventing damage by attempted forced entry.

The SL7000 Series locksets are handing reversible and come with a 60mm standard backset. Furthermore, they can be switched to passage mode for free entry and exit providing the ideal solution for digital keyless entry.

### Unique features:

#### SL7000M

- Controlled entry by keypad outside unless deadlocked by key
- Override entry by key
- Inside lever free to egress unless deadlocked by key
- Standard euro double cylinder assembly
- Suits door thickness 38 - 55mm

#### SL7100

- Controlled entry by keypad outside
- Suits door thickness 35 - 55mm
- Internal latch hold back button
- 70mm backset option available



SL7000M

## Join us on the web!

ASSA ABLOY has entered the social media world! For all the latest ASSA ABLOY hardware and security updates, check us out on Facebook and Twitter.



### Join us on Facebook

Join our **Protect Your Home** page on Facebook to follow the latest on how you can keep your home and family secure.

Go to [www.facebook.com/ProtectYourHomeNZ](http://www.facebook.com/ProtectYourHomeNZ) and click 'Like'.



### Follow us on Twitter

Follow **ASSA ABLOY New Zealand** on Twitter and keep up to date with all our latest news and events.

[www.twitter.com/assaabloyNZ](http://www.twitter.com/assaabloyNZ)

## Endeavour Disability Snib

**INTERLOCK™**  
**ASSA ABLOY**

For those with disabilities or impaired motor skills, the Endeavour Disability Snib is available to enable easier opening of sliding doors.

### Features and benefits:

- Specifically designed to enable easier opening of both the Aria and Albany versions of the Endeavour Sliding Door Lock
- Very easy to install. Simply replace the standard snib with the disability snib



If you have any questions please contact either your ASSA ABLOY Representative or our Customer Services Team on (09) 415 8031.

## Bangers and Beer Competition

Summer may have ended, but BBQs are still awesome in winter so our famous black Interlock BBQ is on the move again. Simply answer the question below and you will go in the draw to win a BBQ shout, fired up by your ASSA ABLOY Representative, for you and your workmates on site.

Email your answers before 5pm, 31 May 2011, to [nzmarketing@assaabloy.com](mailto:nzmarketing@assaabloy.com) and you will be contacted shortly afterwards if your name is drawn. Alternatively, fax your answer with your name, company and contact phone number to 09 415 7222, attention Emily O'Connor.

**Q. What is the name and brand of the popular sliding door handle that was released in February 2011?**

**WIN!**



## Stainless Steel Care

Stainless steel is tough and has a strong resistance to corrosion. It is made up of carbon steel and chromium. Despite its name, there is a risk that stainless steel will rust if it is not maintained appropriately. One of the advantages of stainless steel is that rust can be removed from the surface and its appearance can be restored through proper cleaning.

Scotchbrite pads can be used to remove heavy corrosion. A mildly abrasive cleaner can be used to remove stubborn surface contaminants. Warm water can be used for routine cleaning, and should always be used for rinsing after cleaning with any other product.

Environmental conditions and improper handling can cause surface tarnishing and corrosion on stainless steel. Exposing stainless steel to cleaners containing chlorine or hydrochloric acid, or water with high iron content (i.e. sea water), should be avoided.

It is essential to clean stainless steel frequently with the appropriate method to keep it shiny and durable.

## Recent Publications



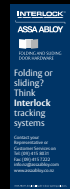
Certified Builders  
April/May 2011



NZ Fishing Magazine  
May/June 2011



Timbers Joiners  
Magazine  
December 2010



Timbers Joiners  
Magazine  
March 2011

## We've Doubled the Warranty Periods!

Effective immediately, ASSA ABLOY has extended the warranty periods for the Interlock and Securicraft brands from 5 to 10 years. This is to reflect a continued commitment to customers and confidence in our products. After many years in the marketplace our products have been used and tried in their various applications, and have consistently proven to stand the test of time with durability and quality.

**10**  
**YEAR**  
**WARRANTY**

Please note that printed material, such as installation instructions and packaging, will be updated over time.

Securicraft®

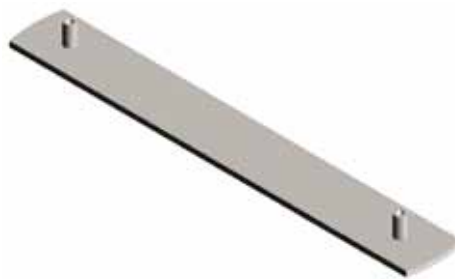
INTERLOCK™

## Palladium Flush Plate

ASSA ABLOY NZ has added a Flush Plate into the Palladium range. It is available in powdercoated and plated finishes.

Ordering the Palladium Flush Plate:

Part Number	Finish	Price (\$)
PA1301B	Black	19.87
PA1301P	P Colours	22.04
PA1301SPEC	Special	29.10
PA1301SC	Satin Chrome	34.54
PA1301SS	Stainless Steel	34.54



If you have any questions please contact either your ASSA ABLOY Representative or our Customer Services Team on (09) 415 8031.

**ASSA ABLOY**

6 Armstrong Road, Albany  
Auckland 0632  
PO Box 100407, North Shore  
Auckland 0745  
New Zealand  
Telephone: +64 9 415 8031  
Facsimile: 0800 456 257  
Email: info.nz@assaabloy.com  
www.assaabloy.co.nz